

sealmax.in



Sealmax
GLOBAL PVT. LTD.

DISTRIBUTOR IN INDIA FOR



Expanded PTFE gaskets & sheets, Structured PTFE gaskets & sheets, Gland Packing, Non-asbestos gaskets & sheets, Graphite gaskets & sheets, Metallic gaskets and other sealing products



Sealmax is an ISO 9001:2015 certified company for your industrial sealing needs. We offer comprehensive sealing solutions for industries across the globe. We manufacture standard sealing products as well as customized solutions as per specific industry demands. Our sealants are engineered specially to meet your component design, operating needs and material specifications to ensure efficiency, safety and economy.

Following our superior products and unequalled service, we have managed to enjoy 100% repeat business as well as add new clients over the years.

In our continuous efforts to serve our clients better, we have now tied up with IDT, a German based company, to bring world class sealing products at your doorstep.



Sealmax took a massive leap by tying up with IDT Group of Germany, a well renowned, comprehensive sealing solutions provider since 1984.

IDT is one of the leading sealing products manufacturers engaged in developing, manufacturing and distributing premium quality sealing products tailored to meet the versatile needs of diverse industries ranging from chemicals, petro-chemicals, refineries, power plants, engineering companies and more. IDT specializes in manufacturing of sealing products used in apparatus, vessels, piping, fittings and pumps.

IDT has extensive product portfolio including products such as high quality gaskets, gland packing, fabric gaskets, PTFE processing, spiral wound gaskets and more. The company also has extensive quality assurance, testing facility and R&D lab to ensure that each of its products is always top notch!

Following the strategic alliance with IDT, Sealmax makes it easy for its clients to have world class products hassle free, prompt delivery and unparalleled services.

Sealmax Products



Style 9909

Sealmax Style 9909 – 100% Multi-directional Expanded PTFE



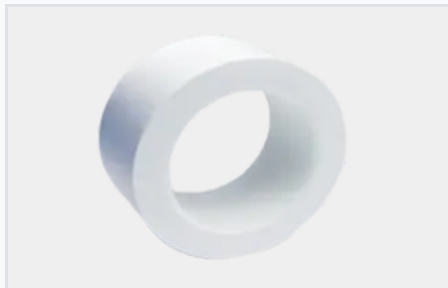
Style 9909T

Sealmax Style 9909T – Expanded PTFE Tape with One-side Adhesive



Style 9900

Sealmax Style 9900 – 100% Virgin PTFE Gaskets and Sheets



Style 9900G

Sealmax Style 9900G – 25% Glass Filled PTFE



Style 940S

Sealmax Style 940S – Slit Type PTFE Envelope



Style 940M

Sealmax Style 940M – Mill Type PTFE Envelope



Style 940D

Sealmax Style 940D – Diffusion Type PTFE Envelope



Style 9006

Sealmax Style 9006



Style 9006M

Sealmax Style 9006M



Style 9007

Sealmax Style 9007



Style 9007M

Sealmax Style 9007M



Style 920

Sealmax Style 920 – Pure Graphite

Sealmax Products



Style 920Pi

Sealmax Style 920Pi – Graphite with SS Plain Insert



Style 920Ti

Sealmax Style 920Ti – Graphite with SS Tanged Metal Insert



Style 930

Sealmax Style 930 – Spiral Wound Gaskets



Style 955

Sealmax Style 955 – Silicone Rubber (Food Grade)



Style 9009

Sealmax Style 9009 – EPDM Rubber



Style 9010

Sealmax Style 9010 – Nitrile Butadiene Rubber (Food Grade)



Style 9015

Sealmax Style 9015 – Chloroprene Rubber



Style 9016

Sealmax Style 9016 – Viton Rubber



Style 900

Sealmax Style 900 – Expanded Graphite



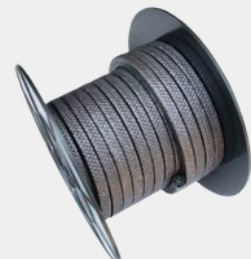
Style 9001

Sealmax Style 9001 – Expanded Graphite with Inconel Wire



Style 902SS

Sealmax Style 902SS – Graphite Gland Packing with SS Insert



Style 903

Sealmax Style 903 – Carbon Fibre impregnated with Graphite

Sealmax Products



Style 904

Sealmax Style 904 - Aramid Staple Yarn with PTFE



Style 906

Sealmax Style 906 - PTFE with Aramid Corners



Style 907

Sealmax Style 907 - Aramid Impregnated with PTFE



Style 908

Sealmax Style 908 - Graphited PTFE with Aramid Corners



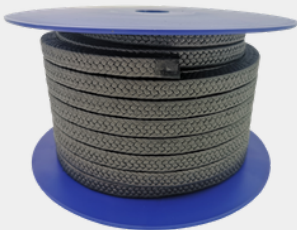
Style 916

Sealmax Style 916 - 100% Pure Expanded PTFE



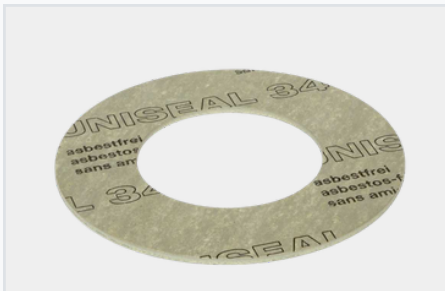
Style 922

Sealmax Style 922 - Extruded PTFE Rope



Style 927

Sealmax Style 927 - Expanded Graphited PTFE



3400FD01 | Aramid Fiber Gaskets

UNISEAL[®] 3400 flat gasket



3700FD01 | Aramid Fiber Gaskets

UNISEAL[®] 3700 - Trafomatic



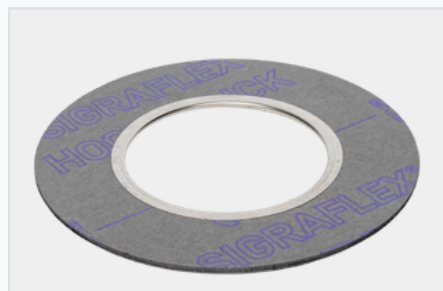
3400FD10 | Aramid Fiber Gaskets

UNISEAL[®] 3400 flat gasket with inner eyelet made from 1.4571



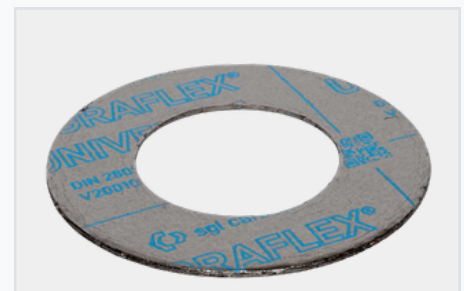
3133FD10 | Aramid Fiber Gaskets

Non-metallic gasket, AFM 34 CO ME[®]



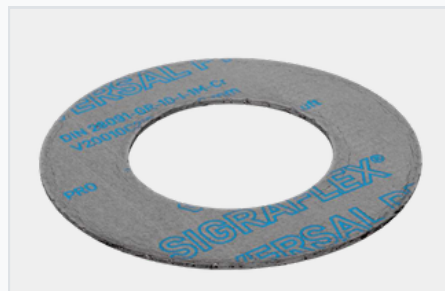
3885FD10 | Graphite Gaskets

SIGRAFLEX[®] Hochdruck flat gasket with inner eyelet



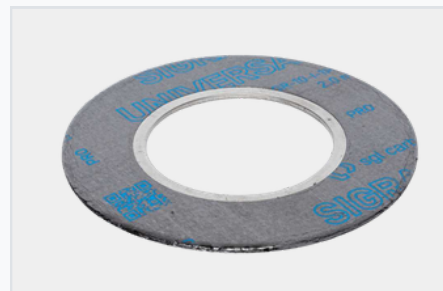
3862FD01 | Graphite Gaskets

Flat gasket SIGRAFLEX[®] Universal (graphite with perforated steel insert)



3865FD01 | Graphite Gaskets

SIGRAFLEX[®] Universal Pro flat gasket/plate



3865FD10 | Graphite Gaskets

SIGRAFLEX[®] Universal Pro with inner eyelet



3885FD01 | Graphite Gaskets

SIGRAFLEX[®] Hochdruck flat gaskets



3885FD30 | Graphite Gaskets

SIGRAFLEX[®] Hochdruck flat gasket with inner and outer eyelet



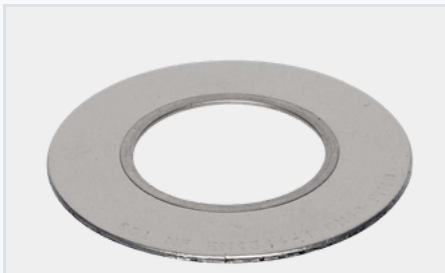
3885FD11 | Graphite Gaskets

SIGRAFLEX[®] Hochdruck flat gasket with inner eyelet and pre-compressed centering ring



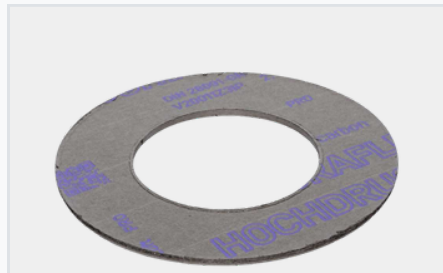
3885FD33 | Graphite Gaskets

SIGRAFLEX[®] Hochdruck flat gasket with inner and outer eyelet as well as outer centering ring



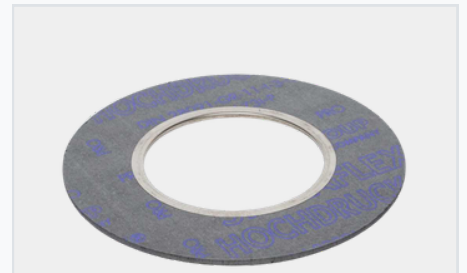
3870FD10 | Graphite Gaskets

SIGRAFLEX® MF flat gasket with inner eyelet



3888FD01 | Graphite Gaskets

SIGRAFLEX® Hochdruck Pro



3888FD10 | Graphite Gaskets

SIGRAFLEX® Hochdruck Pro with inner eyelet



3830FD10 | Graphite Gaskets

SIGRAFLEX® Select flat gasket with inner eyelet 1.4571



3888FD33 | Graphite Gaskets

SIGRAFLEX® Hochdruck Pro with inner and outer eyelet and centering ring



3888FD30 | Graphite Gaskets

SIGRAFLEX® Hochdruck Pro flat gasket with inner and outer eyelet



3888FD11 | Graphite Gaskets

SIGRAFLEX® Hochdruck Pro flat gasket with inner eyelet and pre-compression in the outer sealing area



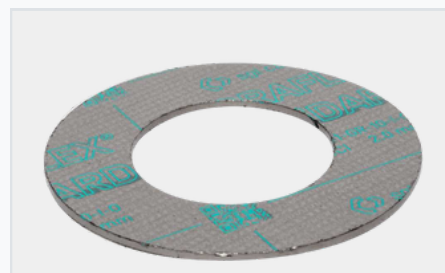
3870FD30 | Graphite Gaskets

SIGRAFLEX® MF flat gasket with inner and outer eyelet for flanges with flat and raised face



3862FD10 | Graphite Gaskets

Flat gasket SIGRAFLEX® Universal with inner eyelet (graphite with perforated steel insert)



3850FD01 | Graphite Gaskets

SIGRAFLEX® Standard flat gasket



3840FD01 | Graphite Gaskets

SIGRAFLEX® Economy flat gasket



3662FD30 | Mica Gaskets

Mica flat gasket with inner and outer eyelet for tongue/groove flange



8288WD10 | Mica Gaskets

Corrugated metallic gasket with two-sided mica layer



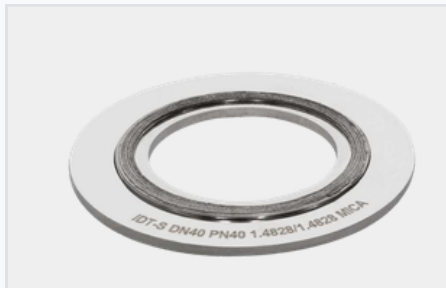
8288WD20 | Mica Gaskets

Corrugated metallic gasket with two-sided mica layer with an inner eyelet



6738KD20 | Mica Gaskets

Grooved gasket with integral centering ring, pre-determined breaking point and both-sided mica layers



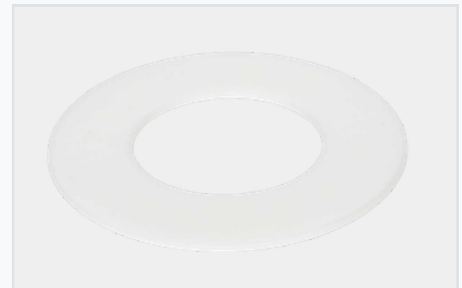
6737SD10 | Mica Gaskets

Spiral Wound Gasket with inner and outer ring, Material: 1.4828/Mica/1.4828



3662FD01 | Mica Gaskets

Mica flat gasket



7110FD01 | PTFE & ePTFE Gaskets

PTFE flat gasket from Dyneon™ TFM™ 1600



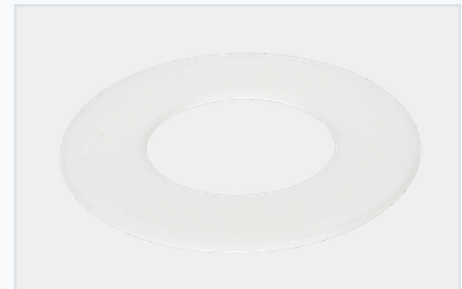
7110FD04 | PTFE & ePTFE Gaskets

Flat gasket from Dyneon™ TFM™ 1600 with kammprofile surface



7221FD04 | PTFE & ePTFE Gaskets

Flat gasket made from conductive Dyneon™ TFM™ 6221 with kammprofile surface



7115FD01 | PTFE & ePTFE Gaskets

PTFE flat gaskets from Dyneon™ TFM™ 4105 L



7550FD01 | PTFE & ePTFE Gaskets

Flat gasket aus UNIFLUOR® WS 7550



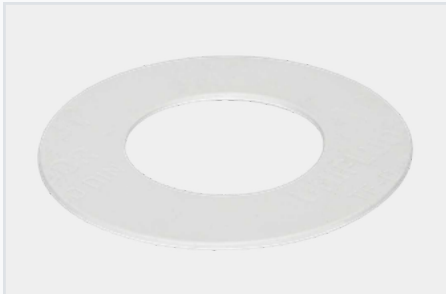
7551FD01 | PTFE & ePTFE Gaskets

Flat gasket from UNIFLUOR® WS 7551



7553FD01 | PTFE & ePTFE Gaskets

Flat gasket from UNIFLUOR® WS 7553



7746FD01 | PTFE & ePTFE Gaskets

Flat gasket from UNIFLUOR[®] 7746



7746FD11 | PTFE & ePTFE Gaskets

Flat gasket from UNIFLUOR[®] 7746 for plastic flange / flange sensitive to stress



7110FD30 | PTFE & ePTFE Gaskets

Flat gasket from TFM[™] 1600 with inner and outer eyelet



7740BD11 | PTFE & ePTFE Gaskets

IDT-UNIFLUOR[®]-ePTFE Universal sealing tape Type 2740



7010FD01 | PTFE & ePTFE Gaskets

PTFE flat gasket from PTFE



7770BD11 | PTFE & ePTFE Gaskets

IDT-UNIFLUOR[®]-ePTFE sealing tape Type 7770



7747RS01 | PTFE & ePTFE Gaskets

IDT-ePTFE round cord type 7747



7451FD01 | PTFE & ePTFE Gaskets

Flat gasket from UNIFLUOR[®] WS 7451



7173ED10 | Envelope Gaskets

PTFE TFM[™] envelope gasket, with inner diffusion barrier and graphite insert



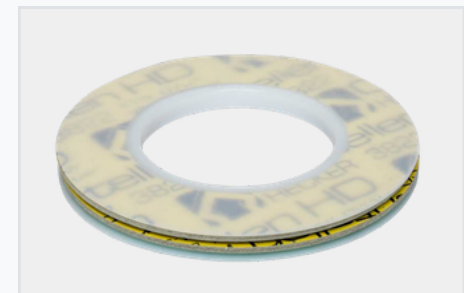
7154ED30 | Envelope Gaskets

PTFE TFM[™] envelope gasket, with inner diffusion barrier, stainless steel corrugated ring and 2 graphite inserts



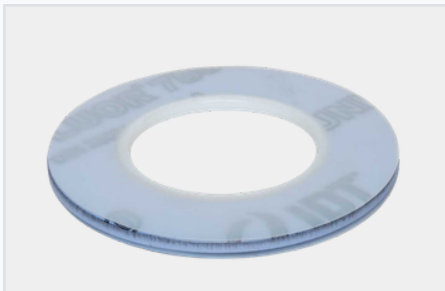
7150ED01 | Envelope Gaskets

Envelope gaskets made of modified PTFE (TFM[™] 1600) with internal diffusion barrier and stainless steel corrugated ring (PW-I)



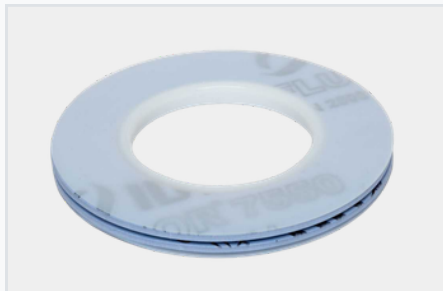
7158ED30 | Envelope Gaskets

PTFE TFM[™] envelope gasket, with inner diffusion barrier, stainless steel corrugated ring and 2 compressed aramid fibre inserts



7145ED10 | Envelope Gaskets

PTFE TFM™ envelope gasket, with inner diffusion barrier and PTFE insert



7145ED30 | Envelope Gaskets

PTFE TFM™ envelope gasket, with inner diffusion barrier, stainless steel corrugated ring and 2 PTFE inserts



7147ED09 | Envelope Gaskets

Envelope gaskets made of modified PTFE (TFM™ 1600) with internal diffusion barrier and stainless steel corrugated ring, fire-safe design



7176ED10 | Envelope Gaskets

PTFE TFM™ envelope gasket, with inner diffusion barrier and EPDM insert



0275TC01 | Tri-Clamp Gaskets

Tri-clamp gasket type 1 made of FKM (standard without lip)



0275TC02 | Tri-Clamp Gaskets

Tri-clamp gasket type 2 made of FKM (standard with lip)



0372TC01 | Tri-Clamp Gaskets

Tri-clamp gasket type 1 made of EPDM (standard without lip)



0372TC02 | Tri-Clamp Gaskets

Tri-clamp gasket type 2 made of EPDM (standard with lip)



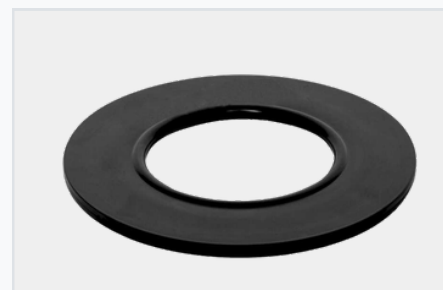
0184GS01 | Rubber-Steel-Gaskets

Rubber-Steel gasket G-ST (NBR)



0374GS01 | Rubber-Steel-Gaskets

Rubber-Steel gasket (EPDM)



0374GS10 | Rubber-Steel-Gaskets

Rubber-Steel gasket G-ST-P/S (EPDM)



0285GS01 | Rubber-Steel-Gaskets

Rubber-Steel gasket (FPM)



0285GS10 | Rubber-Steel-Gaskets

Rubber-Steel gasket G-ST-P/S (FPM)



0184GS10 | Rubber-Steel-Gaskets

Rubber-Steel gasket G-ST-P/S (NBR)



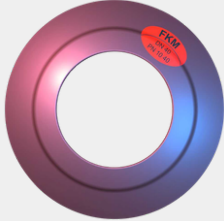
0285GS30 | Rubber-Steel-Gaskets

Rubber-Steel gasket G-ST-P/KN (FPM)



0184GS39 | Rubber-Steel-Gaskets

Rubber-Steel gasket G-ST-P / HTB (NBR)



0285GS12 | Rubber-Steel-Gaskets

Rubber-Steel-Gaskets version KGS GII made of FKM



0181GS12 | Rubber-Steel-Gaskets

Rubber-Steel-Gaskets version KGS GII made of NBR



0378GS12 | Rubber-Steel-Gaskets

Rubber-Steel-Gaskets version KGS GII made of EPDM



8711WD10 | Corrugated Metal Gaskets

Corrugated metallic gasket with two-sided graphite layer



8711WD12 | Corrugated Metal Gaskets

Corrugated metallic gasket with two-sided partial graphite layer




8711WD20 | Corrugated Metal Gaskets

Corrugated metallic gasket with two-sided graphite layer and inner eyelet



8711WD24 | Corrugated Metal Gaskets

Corrugated metallic gasket with partial graphite layer and inner eyelet



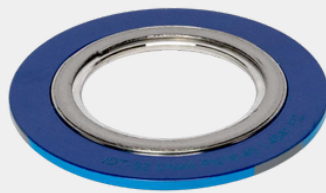
8061WD20 | Corrugated Metal Gaskets

LE-SAFE adhesive-free Corrugated metallic gasket with two-sided graphite layer and inner eyelet



6411SD01 | Spiral Wound Gasket

Spiral Wound Gasket without inner and outer ring, Material: 1.4541/Graphite



6046SD10 | Spiral Wound Gasket

Spiral Wound Gasket with inner and outer ring, Material: 1.4404/Graphite/Carbon Steel



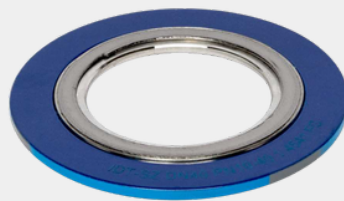
6416SD20 | Spiral Wound Gasket

Spiral Wound Gasket with outer ring, Material: 1.4541/Graphite



6411SD30 | Spiral Wound Gasket

Spiral Wound Gasket with inner ring, Material: 1.4541/Graphite



6043SD01 | Spiral Wound Gasket

Spiral Wound Gasket without inner and outer ring, Material: 1.4404/PTFE



6045SD10 | Spiral Wound Gasket

Spiral Wound Gasket with inner and outer ring, Material: 1.4404/PTFE/Carbon Steel



6711KD20 | Kammprofile Serrated Gaskets

Grooved gasket with integral centering ring, pre-determined breaking point and both-sided graphite layers



6711KD30 | Kammprofile Serrated Gaskets

Grooved gasket with loose centering ring [non-integral] and both-sided graphite layers



6711KD01 | Kammprofile Serrated Gaskets

Grooved gasket without centering ring with both-sided graphite layers



6711KD24 | Kammprofile Serrated Gaskets

Grooved gasket [convex-shaped profile] with integral centering ring, pre-determined breaking point and both-sided graphite layers



6713KD20 | Kammprofile Serrated Gaskets

Grooved gasket with integral centering ring, pre-determined breaking point and both-sided PTFE layers



6713KD30 | Kammprofile Serrated Gaskets

Grooved gasket with loose centering ring [non-integral] and both-sided PTFE layers



6713KD01 | Kammprofile Serrated Gaskets

Grooved gasket without centering ring and both-sided PTFE layers



6713KD24 | Kammprofile Serrated Gaskets

Grooved gasket [convex-shaped profile] with integral centering ring, pre-determined breaking point and both-sided PTFE layers



6711KD06 | Kammprofile Serrated Gaskets

Grooved gasket [convex-shaped profile] without centering ring with both-sided graphite layers



6041KD20 | Kammprofile Serrated Gaskets

LE-SAFE adhesive-free Grooved gasket with integral centering ring, pre-determined breaking point and both-sided graphite layers



6041KD30 | Kammprofile Serrated Gaskets

LE-SAFE adhesive-free Grooved gasket with loose centering ring [non-integral] and both-sided graphite layers



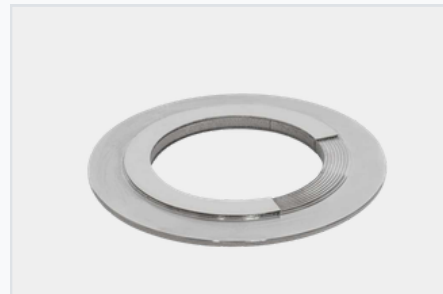
6041KD01 | Kammprofile Serrated Gaskets

LE-SAFE adhesive-free Grooved gasket without centering ring with both-sided graphite layers



6713KD04 | Kammprofile Serrated Gaskets

Grooved gasket without centering ring and PTFE envelope



6737KD20 | Kammprofile Serrated Gaskets

Grooved gasket with integral centering ring, pre-determined breaking point and both-sided silver layers



6711KD34 | Kammprofile Serrated Gaskets

Grooved gasket [convex-shaped profile] with loose centering ring and graphite layers on both sides



8330RJ01 | Ring Joint

RTJ-Gaskets with Osculating Radius (Soft Iron, Oval)



8330RJ10 | Ring Joint

RTJ-Gaskets with Raised Sealing Surface (Soft Iron, Octagonal)



8730RJ10 | Ring Joint

RTJ-Gaskets with Raised Sealing Surface (F5 / 1.7362, Octagonal)



8060RJ10 | Ring Joint

RTJ-Gaskets with Raised Sealing Surface (Edelstahl 316L, Octagonal)



8730RJ01 | Ring Joint

RTJ-Gaskets with Osculating Radius (F5/1.7362, Oval)



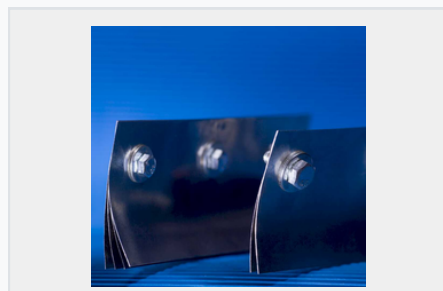
8060RJ01 | Ring Joint

RTJ-Gaskets with Osculating Radius (Edelstahl 316L, Oval)



8711FD41 | Metal Gaskets

Metal-Jacketed Gaskets with Graphite Filler



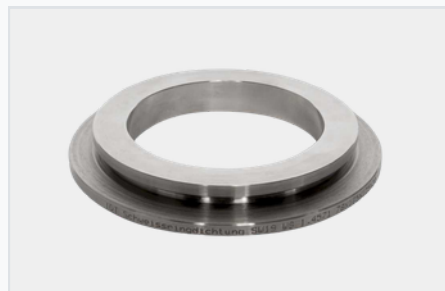
8110ZT00 | Metal Gaskets

Baffle Seal [sealing on one side]



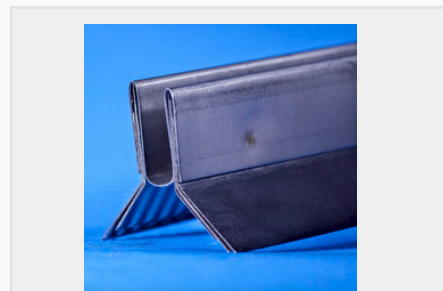
8710SW10 | Metal Gaskets

Weld Ring Gasket Type S [1.4571]



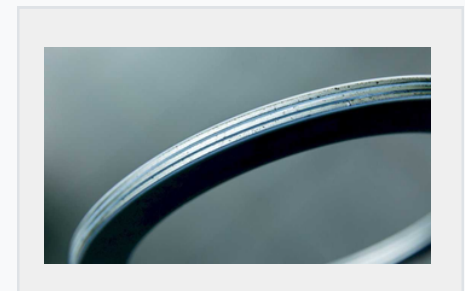
8710SW19 | Metal Gaskets

Weld Ring Gasket Type S with auxiliary seal [1.4571]



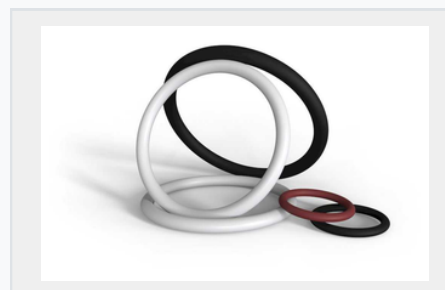
8110ZT09 | Metal Gaskets

Baffle Seal [sealing on both sides]



Butterfly Valve Seals

Butterfly Valve Seals for Triple Offset Valves [TOSV]



O-Rings

O-Rings



8330LD01 | Lens Gaskets

Lens Gasket DD13 [1.0335]



8460LD01 | Lens Gaskets

Lens Gaskets C22.8N [1.0460]

IDT Gaskets



8350LD01 | Lens Gaskets

Lens Gaskets 13CrMo4-5 [1.7335]



8710ER01 | Inlay rings

Insert Ring with smooth contact surfaces

IDT Packings



2724F | TA Luft Packing Sets

UNIFLUOR[®]-TA-Luft packing set



1374 | TA Luft Packing Sets

UNIGRAF[®]-TA-Luft sealing set



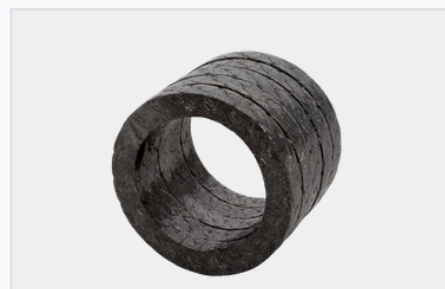
2724FS | TA Luft Packing Sets

UNIFLUOR[®]-TA-Luft gland packing set



1339 | TA Luft Packing Sets

UNIGRAF[®] GasketSet For TA-Luft Valves



1376 | TA Luft Packing Sets

UNIGRAF[®] Low Emission Packing for Valves and Fittings



2750M | Special Packings

Meta-filament gland packing, with PTFE impregnation and lubricant, silicone-free



2224 | Special Packings

PTFE-packings with aramid edges



2225 | Special Packings

PTFE-Aramid-combination packing with lubricant



2226 | Special Packings

PTFE/graphite packings with aramid edges



2229 | Special Packings

PTFE/graphite-aramid-combination packing with lubricant



2722 | Special Packings

Aramid-continuous filament-packing with PTFE impregnation and lubricant



2750 | Special Packings

Aramid-stable fibre-packing with PTFE impregnation and lubricant, silicone-free



2755 | Special Packings

Ramie-packing with PTFE impregnation and lubricant, silicone-free



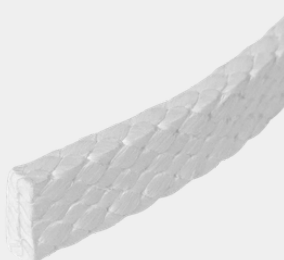
2785 | Special Packings

Synthetic-packing with PTFE impregnation and lubricant, silicone-free



1783 | Special Packings

Polyacrylic gland packing with PTFE impregnation and lubricant, silicone-free



1724-1725 | Special Packings

PTFE sealing tape with PTFE impregnation



2724 | PTFE Packings

PTFE Packing without lubricant, silicone-free



2725 | PTFE Packings

PTFE Packing with lubricant, silicone-free



2725F | PTFE Packings

PTFE Packing with lubricant, silicone-free



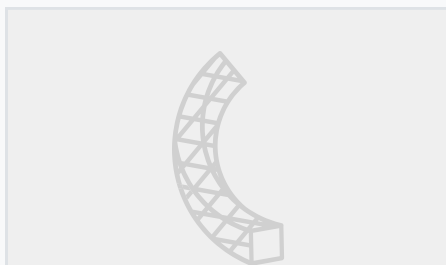
2726 | PTFE Packings

PTFE-graphite-packing without lubricant, silicone-free



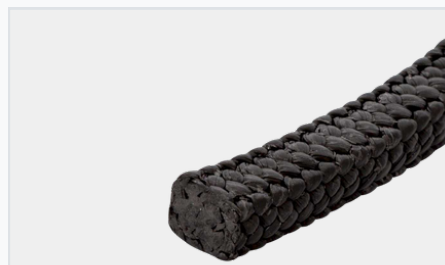
2727 | PTFE Packings

PTFE/graphite packings strand-die face extruded



2728 | PTFE Packings

PTFE-packings strand-die face extruded, graphite-free



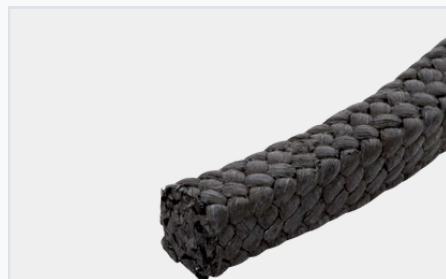
2729 | PTFE Packings

PTFE/graphite packing with lubricants



2730 | PTFE Packings

PTFE-valve cord concentrically braided and additionally sheathed



2719 | PTFE Packings

PTFE/Graphite-Packing with lubricant, silicone-free



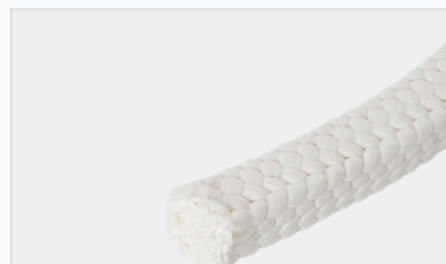
1737 | PTFE Packings

ePTFE-packing made from expanding PTFE with incorporated white filler, with silicone oil as lubricant



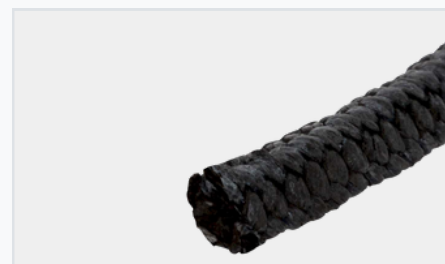
1738 | PTFE Packings

ePTFE gland packing made of expanded PTFE, without lubricant



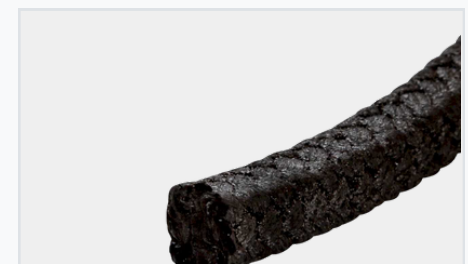
2724F | PTFE Packings

PTFE Packing without lubricant, silicone-free



1375 | Graphite-Carbon Packings

Carbon fiber packing, with little lubricant addition, silicone-free



1377 | Graphite-Carbon Packings

High-pressure packing, made from carbon fibre, with heat and pressure resistant impregnation



1385 | Graphite-Carbon Packings

High pressure packing, made from graphite fibre, with heat and pressure resistant impregnation



1372 | Graphite-Carbon Packings

Graphite foil packing, made from expanding pure graphite foil yarn



1395 | Graphite-Carbon Packings

Graphite foil packing, with outer reinforcement made from Inconel wire



1373 | Graphite-Carbon Packings

Graphite foil packing, with high temperature resistant metal reinforcement



1372K | Graphite-Carbon Packings

Graphite foil gland packing, made of expanded pure graphite foil yarn, with carbon fiber edge reinforcement



1372P | Graphite-Carbon Packings

UNIGRAF-Graphite foil packing



1376 | Graphite-Carbon Packings

UNIGRAF® Low Emission Packing for Valves and Fittings



1380 | Graphite Foil Rings

Pure graphite foil rings



1390 | Graphite Foil Rings

Pure graphite foil rings

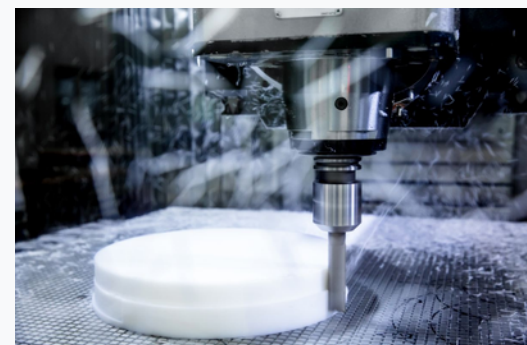
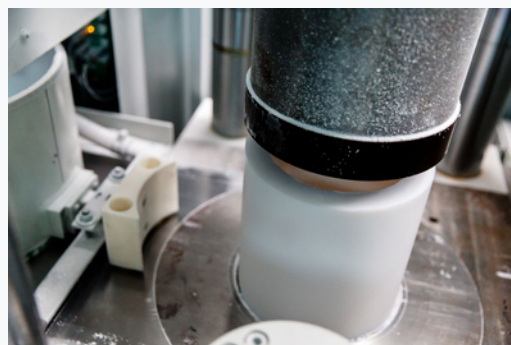


PTFE high-performance plastics are IDT's strength. They are used in demanding applications – when reliability and safety have priority and there is no alternative to the outstanding material properties. This is precisely why IDT manufactures PTFE semi-finished products [press-sintered parts or extrudates] and PTFE molded parts as well as composite parts made of PFA and metal with precision and technical expertise. IDT is also experienced in processing other fluorinated polymers such as PVDF and PCTFE, engineering plastics such as PE-UHMW, PEEK and POM. Moulded parts such as gasket inserts, seat rings, bellows, bearing bushes and cover seals are manufactured according to customer specifications, drawings, or samples.

In order to be able to react flexibly and quickly to individual customer requirements, IDT stocks almost 20 custom compounds in addition to the pure, virgin PTFE and the more diffusion-tight Dyneon TFM[®]. Through compounding, the already very advantageous properties of PTFE can be modified and improved for special requirements. Organic or inorganic substances such as graphite, glass fiber or quartz are added to the material for this purpose.

The material properties of PTFE include:

- Heat resistance from -268 to +260 °C
- Chemical resistance, almost universal, even against aggressive media
- Low coefficient of friction, high elongation at break and flexural fatigue strength
- No material adhesion due to low surface tension
- Physiologically harmless, even in continuous operation up to 260 °C
- insensitivity to weathering and high UV stability





0710PG | Crystallo

TRIPP Kristallo packing



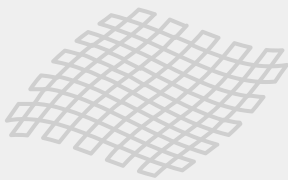
0730GE | Crystallo

Kristallo tape



0704PG | Crystallo

Kristallo cord



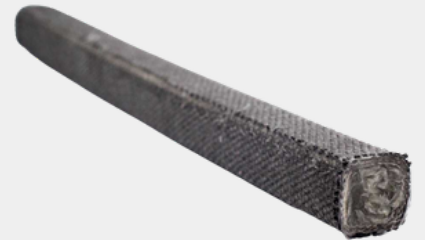
0703PG | Crystallo

Aramid cord



1635GE | Crystallo

Kristallo fabric gasket



1640GE | Crystallo

Kristallo fabric gasket



1630GE | Crystallo

Kristallo fabric gasket



0805GE | Thermotop[®]

Thermotop[®] cord



0810PG | Thermotop[®]

Thermotop[®] packing



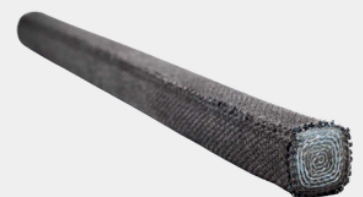
0830GE | Thermotop[®]

Thermotop[®] tape



2035GE | Thermotop[®]

Thermotop[®] fabric gaskets



2040GE | Thermotop[®]

Thermotop[®] fabric gasket



2030GE | Thermotop®

Thermotop® fabric gaskets



2034GE | Thermotop®

Thermotop® fabric gaskets



2680GE | Thermotop®-Sil

Thermotop®-Sil Tape



1680GE | Thermotop®-Sil

Thermotop®-Sil Packings



2680GE | Thermotop®-Sil

Thermotop®-Sil Cord



0905GE | Ceramic

Keram cord



1910PG | Ceramic

Keram packing



0930GE | Ceramic

Keram tape



1935GE | Ceramic

Keram fabric gaskets



1940GE | Ceramic

Keram fabric gaskets



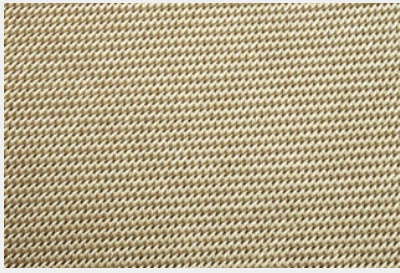
2035GE | Thermotop®

Keram fabric gaskets



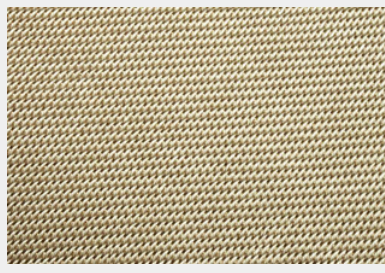
0950GE | Heat Protection

Keram fabric



0850GE | Heat Protection

Silicat fabric



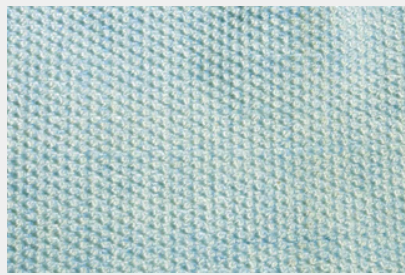
0851GE | Heat Protection

Silicat fabric



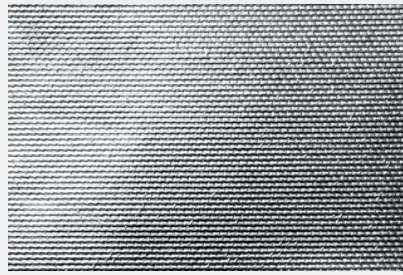
0840GE | Heat Protection

Thermotop[®] fabric



0841GE | Heat Protection

Thermotop[®] fabric



0550GE | Heat Protection

Carbomid fabric



0750GE | Heat Protection

Kristallo fabric



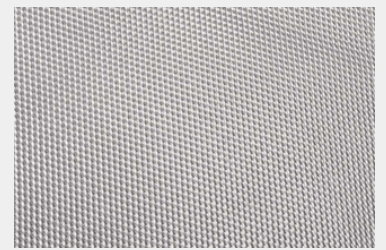
0650GE | Heat Protection

Kristallo fabric



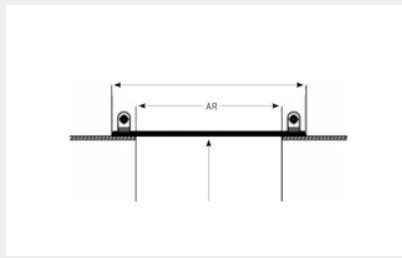
0680GE | Heat Protection

Thermotop[®]-Sil fabric



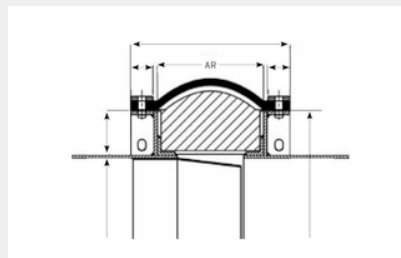
0660GE | Heat Protection

Thermo-E-Glass



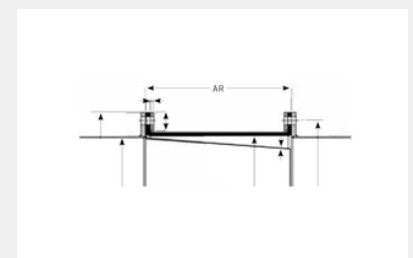
2300KP01 | Tube

Tube Expansion Joint [pipeline installation]



2300KP02 | Tube

Tube Expansion Joint [Installation on Mounting Flanges]



2300KP10 | Flange

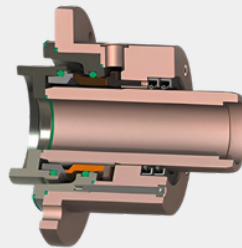
Flange Expansion Joint [with self-sealing flanges]

IDT Specialties



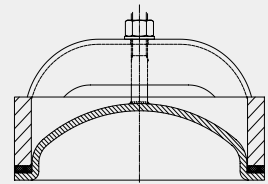
Specialties

PTFE-Protection & Sealing Ring



Specialties

Mechanical seals



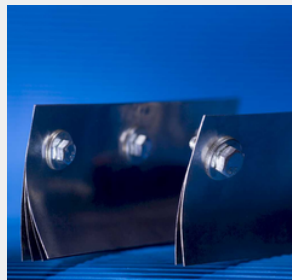
Specialties

Boiler Gaskets



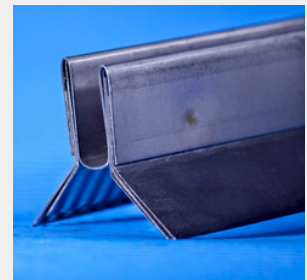
Specialties

Insulation Kit



8110ZT00 | Metal Gaskets

Baffle Seal [sealing on one side]



8110ZT09 | Metal Gaskets

Baffle Seal [sealing on both sides]



9508WP01 | Special Solutions

Spray Shield [PTFE]



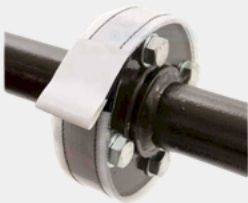
9509WP00 | Special Solutions

Spray Shield [Steel]



2636GE19 | Special Solutions

Dome Cover Seals for tank
wagons [DD13]



9508WP00 | Special Solutions

Spray Shield PTFE (transparent)

IDT Accessories



9508WP01 | Special Solutions

Spray Shield [PTFE]



9509WP00 | Special Solutions

Spray Shield [Steel]



9508WP00 | Special Solutions

Spray Shield PTFE
(transparent)



3890BD11 | Accessories

Flexible pure graphite tape, crinkled, made from pure graphite expandat without filler and binders (corrugated with glue strip)



1000 | Accessories

PTFE thread tape [HD]



1006 | Accessories

PTFE thread tape



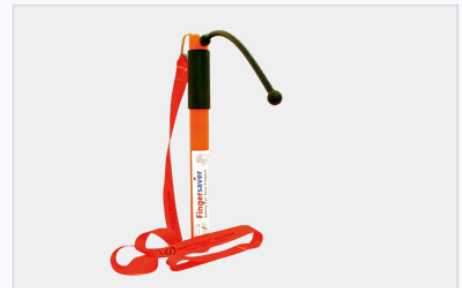
1009 | Accessories

Anti-seize, nickel-free [high temperature]



9000WP000750003 | Accessories

Gasket remover (RE-MOVE 831)



9503WP000350000 | Accessories

Fingersaver Standard



9503WP000300000 | Accessories

Fingersaver Compact



9503WP000900000 | Accessories

Fingersaver Long

